



Ministry of People's Power for Interior and Justice / (ONA National Anti-Drug Office)

DRUG SEIZURES ACCORDING TO TYPE IN THE BOLIVARIAN REPUBLIC OF VENEZUELA

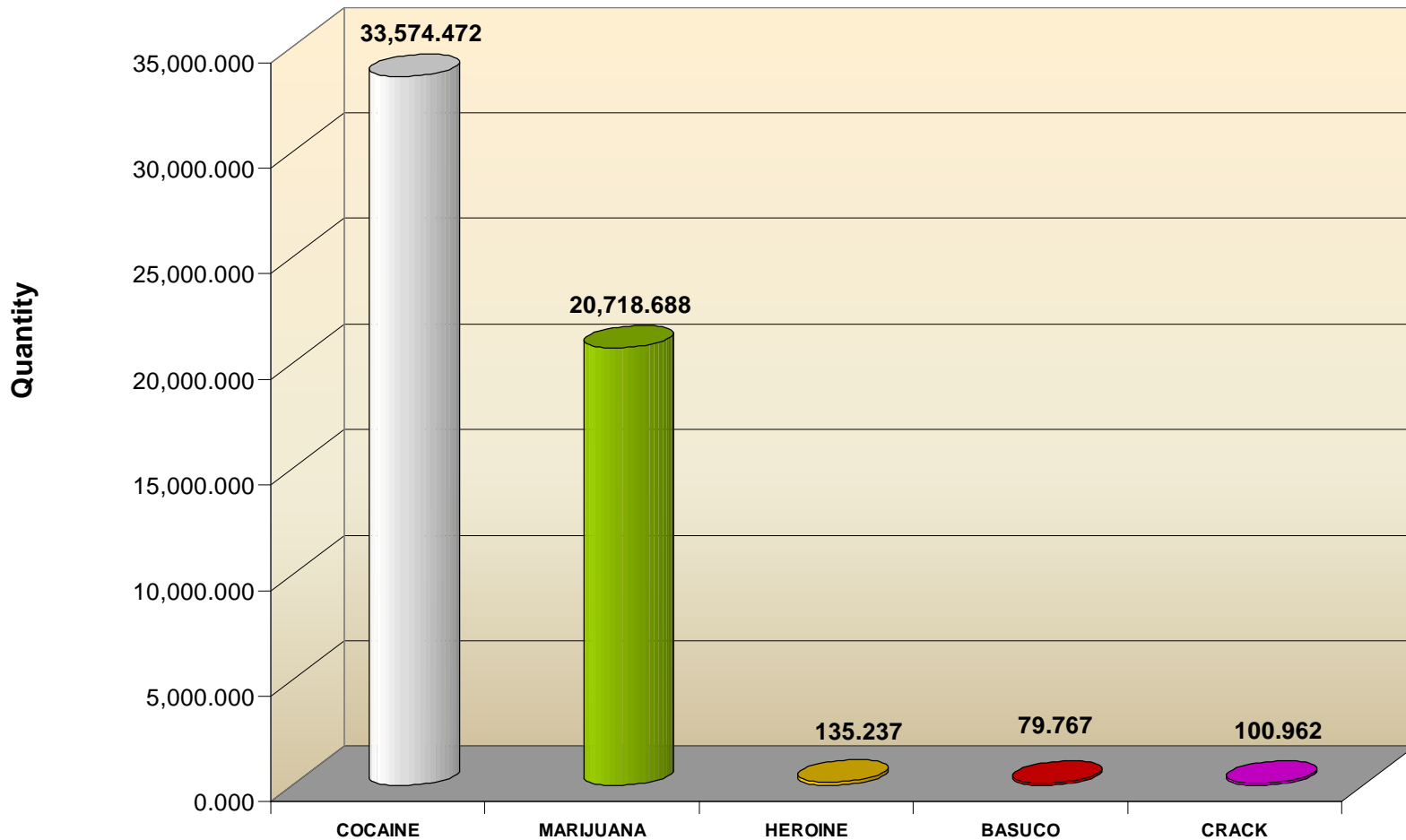


DRUG	QUANTITY (KGS)	(%)
COCAINE	33,574.472	61.48%
MARIJUANA	20,718.688	37.94%
HEROINE	135.237	0.25%
BASUCO	79.767	0.15%
CRACK	100.962	0.18%
TOTAL	54,609.125	100%
SYNTHETIC DRUG	QUANTITY (UNITS)	(%)
EXTASIS	24	100%
TOTAL	24	100%

(SOURCE: NATIONAL ARMED FORCES AND POLICE ORGANIZATIONS)



Ministry of People's Power for Interior and Justice / (ONA National Anti-Drug Office)
DRUG SEIZURES ACCORDING TO TYPE IN THE BOLIVARIAN REPUBLIC OF VENEZUELA
YEAR 2008



(SOURCE: NATIONAL ARMED FORCES AND POLICE ORGANIZATIONS)



Ministry of People's Power for Interior and Justice / (ONA National Anti-Drug Office)
DRUG SEIZURES ACCORDING TO TYPE IN THE BOLIVARIAN REPUBLIC OF VENEZUELA
YEAR 2008

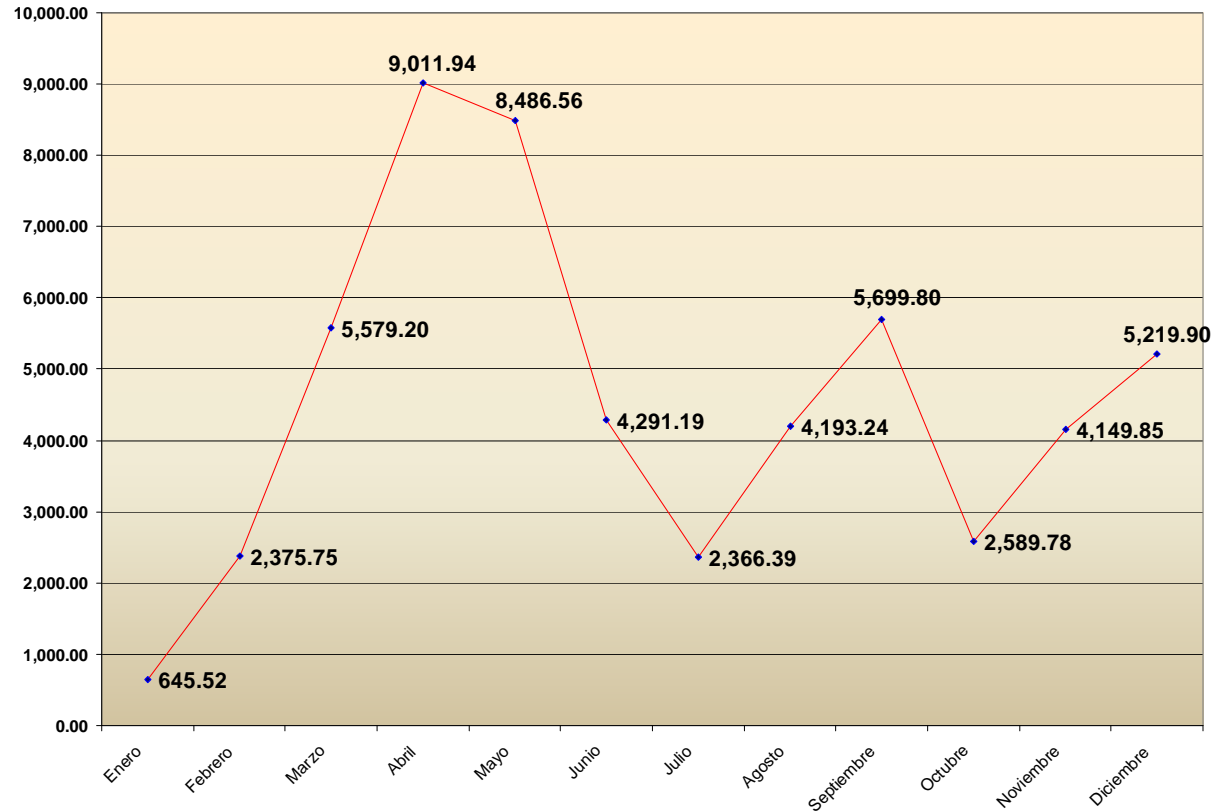


Month	COCAINE	MARIJUANA	HEROINE	BASUCO	CRACK	TOTAL	(%)
January	359.93	261.96	0.16	15.70	7.77	645.52	1.18%
February	1,350.44	992.79	10.75	10.73	11.03	2,375.75	4.35%
March	4,260.66	1,293.48	15.77	1.71	7.58	5,579.20	10.22%
April	5,951.73	3,048.99	2.10	0.41	8.71	9,011.94	16.50%
May	3,651.79	4,818.52	1.71	5.19	9.36	8,486.56	15.54%
June	2,972.36	1,292.39	2.00	17.90	6.53	4,291.19	7.86%
July	1,588.22	765.69	2.79	4.18	5.52	2,366.39	4.33%
August	1,992.30	2,160.99	27.22	1.15	11.57	4,193.24	7.68%
September	3,432.73	2,258.36	3.94	1.49	3.29	5,699.80	10.44%
October	1,054.58	1,456.73	61.04	10.07	7.36	2,589.78	4.74%
November	2,464.98	1,655.87	4.71	8.49	15.79	4,149.85	7.60%
December	4,494.75	712.92	3.06	2.75	6.43	5,219.90	9.56%
Total	33,574.47	20,718.69	135.24	79.77	100.96	54,609.13	100.00%
(%)	61.48%	37.94%	0.25%	0.15%	0.18%	100.00%	

(SOURCE: NATIONAL ARMED FORCES AND POLICE ORGANIZATIONS)



Ministry of People's Power for Interior and Justice / (ONA National Anti-Drug Office)
DRUG SEIZURES ACCORDING TO TYPE IN THE BOLIVARIAN REPUBLIC OF VENEZUELA
YEAR 2008
(QUANTITIES EXPRESSED IN KILOGRAMS)



(SOURCE: NATIONAL ARMED FORCES AND POLICE ORGANIZATIONS)